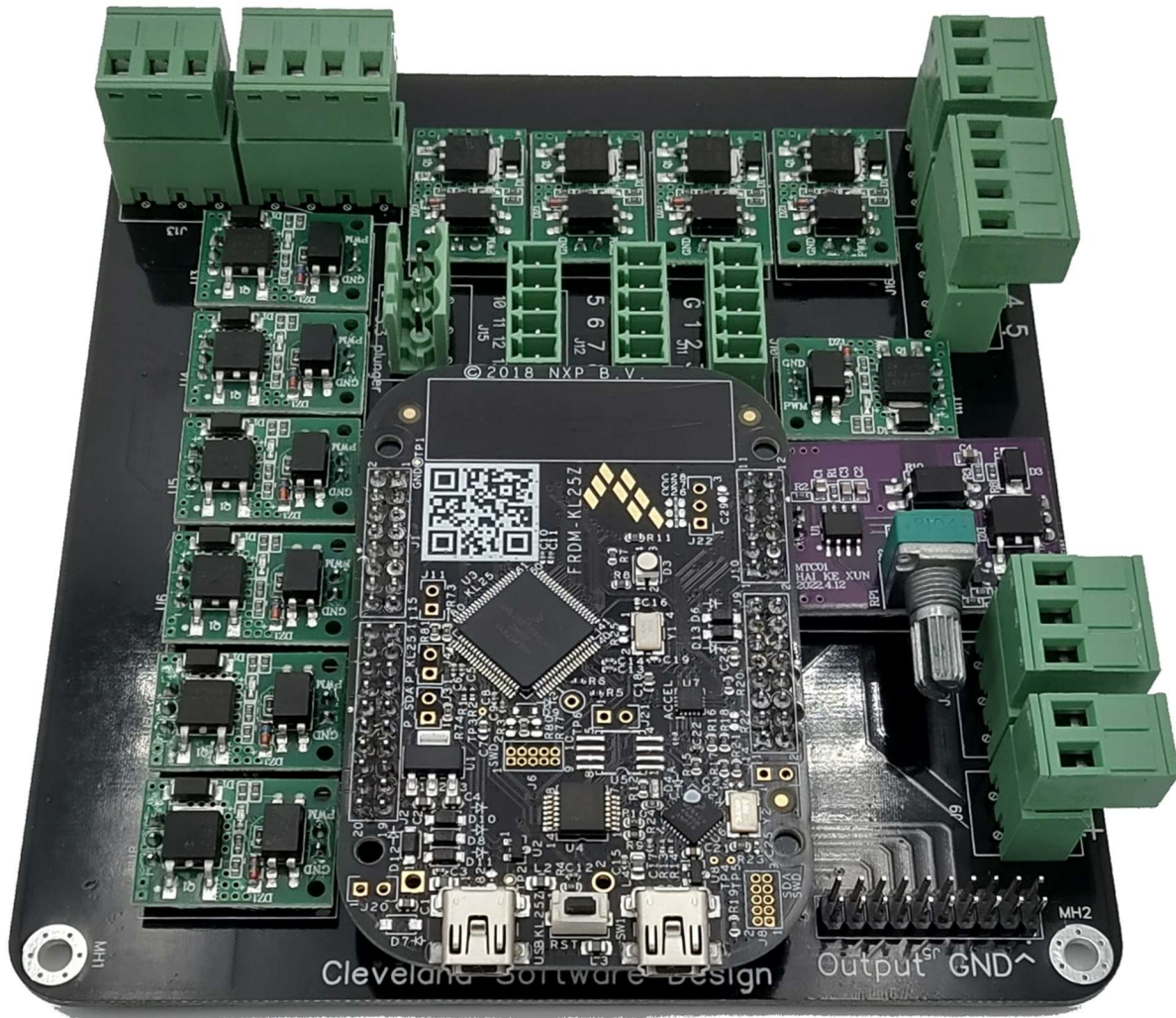


Setup Pinscape on CSD 12 channel board



Step 1: Install configuration

- Pick “stand alone KL25Z (or your own custom boards)”
- Load the config file
- Click “program KL25Z” button

Settings

TESTING...
50059 REV. 1.0
559 123456 12345

Configuration settings for KL25Z CPU ID 0042-003E7018-62884E45

Memory used: 12K bytes of 16K bytes (4,156 bytes free) [Explain](#)

System type. Are you using this KL25Z on its own, or with a set of expansion boards? [Help](#)

1: Select Stand-alone KL25Z

Stand-alone KL25Z (or your own custom boards)

Pinscape Expansion Boards

Pinscape All-in-One

Pinscape Lite

USB Identification. This is how the KL25Z identifies itself to Windows through the USB port.

LedWiz Unit 8 (USB Vendor ID FAFA, Product 00F7)

• If you have a **real** LedWiz unit in your system, choose **LedWiz Unit 8** for your first Pinscape unit, 9 for the second, etc.

2: Select "Load File"

3: Click "Program KL25Z"

Go to...

Step 2: Customize the configuration

- Select the orientation based on how it is mounted in your cabinet

Accelerometer orientation. If you're using the accelerometer (for nudge sensing), the software needs to know how the KL25Z is oriented in the cabinet so that it can report motion in the right direction. Install the KL25Z in one of the orientations shown below, level with the floor of the cabinet, with the chips and LEDs facing up.

Ports facing front

Ports facing left

Ports facing right

Ports facing rear

- Disable the plunger if you are not using one

Plunger sensor setup **Set to "None" If you are not using a plunger**

Sensor type: [Live Sensor View](#)

- **Adjust button setting if desired (not required, but can switch to keyboard mapping)**

Button inputs. You can use the KL25Z as a key encoder to connect pinball-style buttons on your cabinet connections and key assignments below. Each input can be mapped as a joystick button or keyboard key. to change a setting.

[Test Buttons](#)

↑ **Shift button number:** [Help](#)

Shift OR Key mode
 Shift AND Key mode

[Set standard joystick buttons](#) | [Set standard keyboard keys](#) | [View standard key assignments](#)

No.	Port	↑ PC Input	Options [?]	VP Usage
1	<input type="text" value="PTC2"/>	↑ 1		-

- **Adjust number of TLC5940 chips you have (set to the number of expansion boards you have)**

TLC5940 (external PWM controller chip) setup [What's this?](#)

Number of TLC5940 chips:

SI (serial data) output:

SCLK (serial clock) output:

XLAT output:

BLANK output:

GSCCLK output:

- **Any other changes you would like to make**
- **Click "Program KL25Z"**








Step 3: Test your board

- Click the home button
- Test your outputs, button inputs and plunger through the different dialogs

Welcome! This program helps you set up and configure your Pinscape Controller units.

Here are the controllers currently connected:

Pinscape Unit #1 | LedWiz Unit #8 | CPU ID 0042-003E7018-62884E45 | Firmware 2021-12-22-2148

						
Settings	Backup	Update	Plunger	Joystick	Buttons	Outputs

To connect a controller that you've already set up, plug a USB cable into the **joystick** port on the KL25Z as shown at right, and plug the other end into a free USB port on your PC.

(The other USB connector on the KL25Z is the **programming** port, which is used for installing and updating the firmware. It's fine to leave both ports plugged in, but if you only have one cable, connect it to the joystick port during normal use.)

